

# TATA HITACHI



## CHALO DESH BANAYE



### TATA HITACHI SUPPORT SOLUTIONS



#### FMC

**Full Maintenance Contract**

Fixed hourly rate of maintenance and repairs



#### CAP

**CAP Contract**

Ensured parts and lubricant consumption for a defined period.



#### ASC

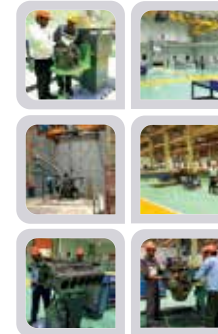
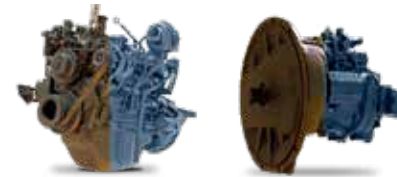
**Annual Service Contract**

Periodic planned visits made by Tata Hitachi trained engineers for inspection, service and consultation for maximum uptime of equipment.



### TATA HITACHI RE-MAN FACILITY AT KHARAGPUR

- Conforming to global standards. Certified by Hitachi, Japan
- Economical, reliable and durable: meeting stringent quality standards.
- Backed by a comprehensive warranty.
- For a wide range of machines: From 2 ton to 260 ton.



Facilities across the Globe: JAPAN, INDONESIA, AUSTRALIA, ZAMBIA, CHINA, AMERICA, EUROPE & INDIA

### GENUINE SPARE PARTS



### DEALER INFRASTRUCTURE



Integrated Dealership Facility



Spare Parts Warehouse



Experience Zone



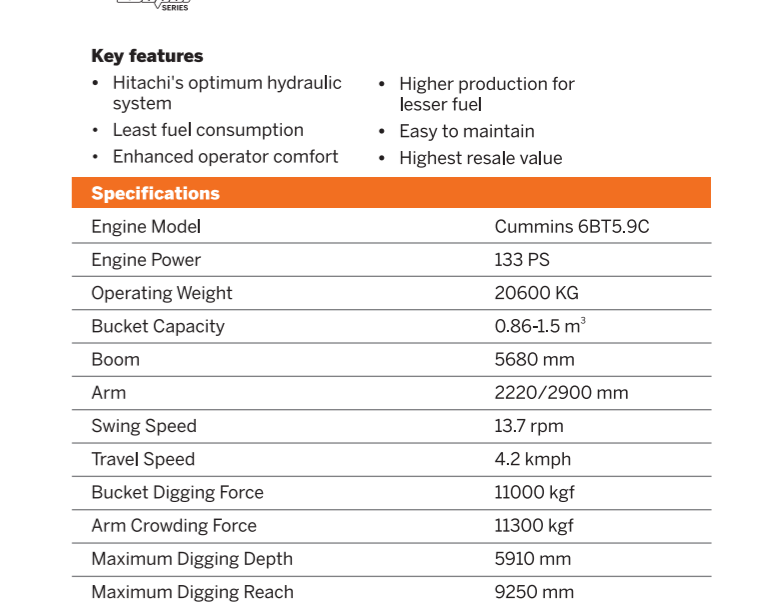
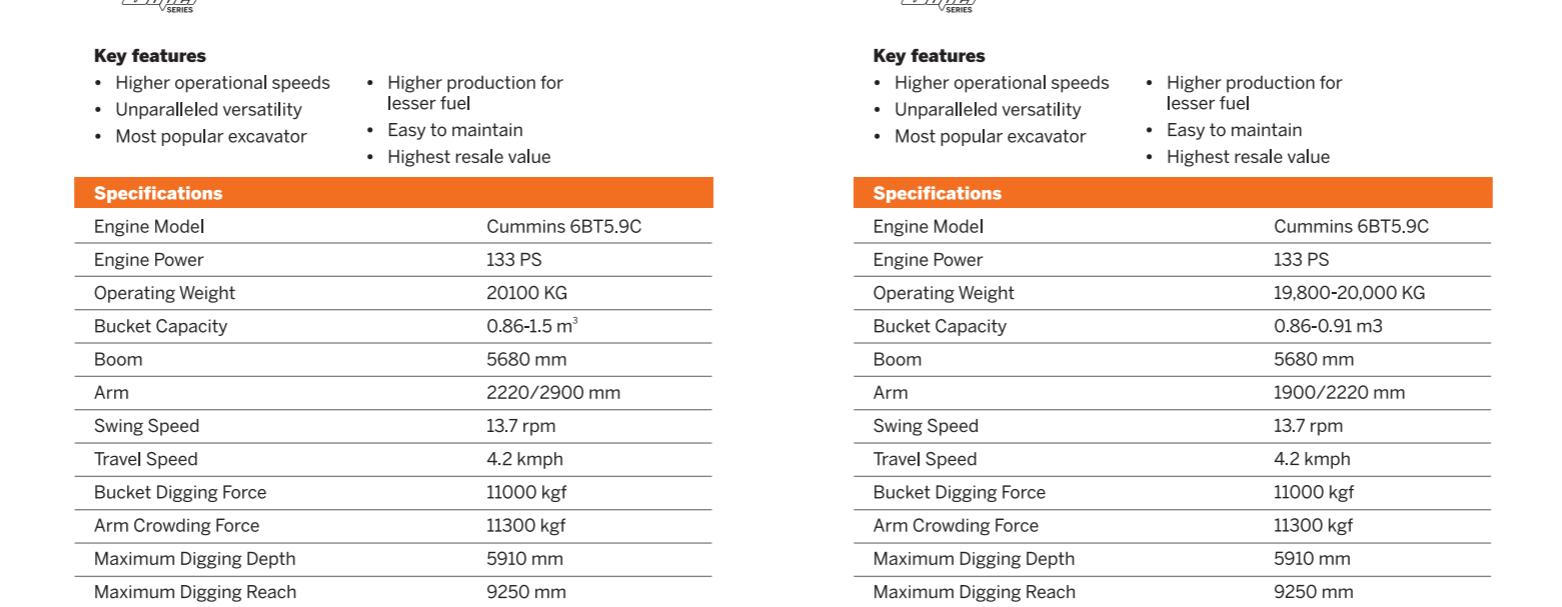
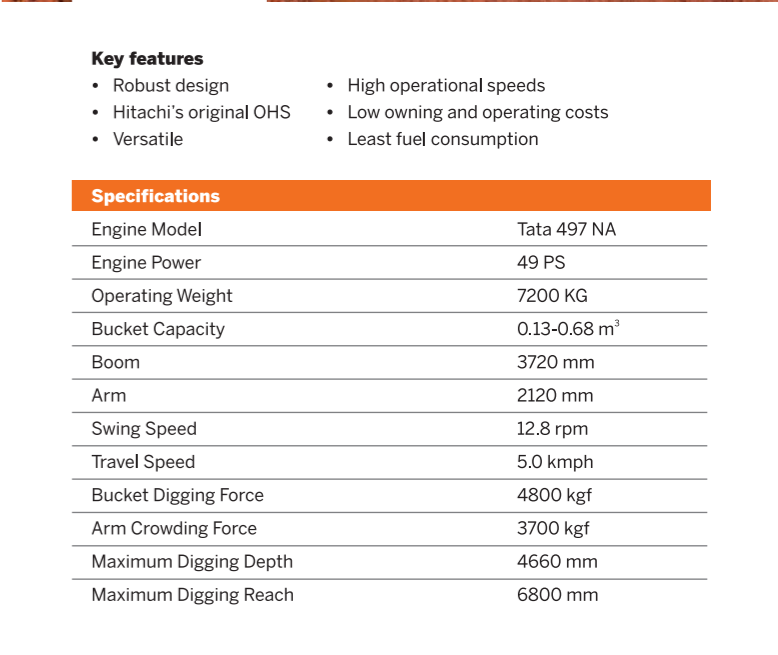
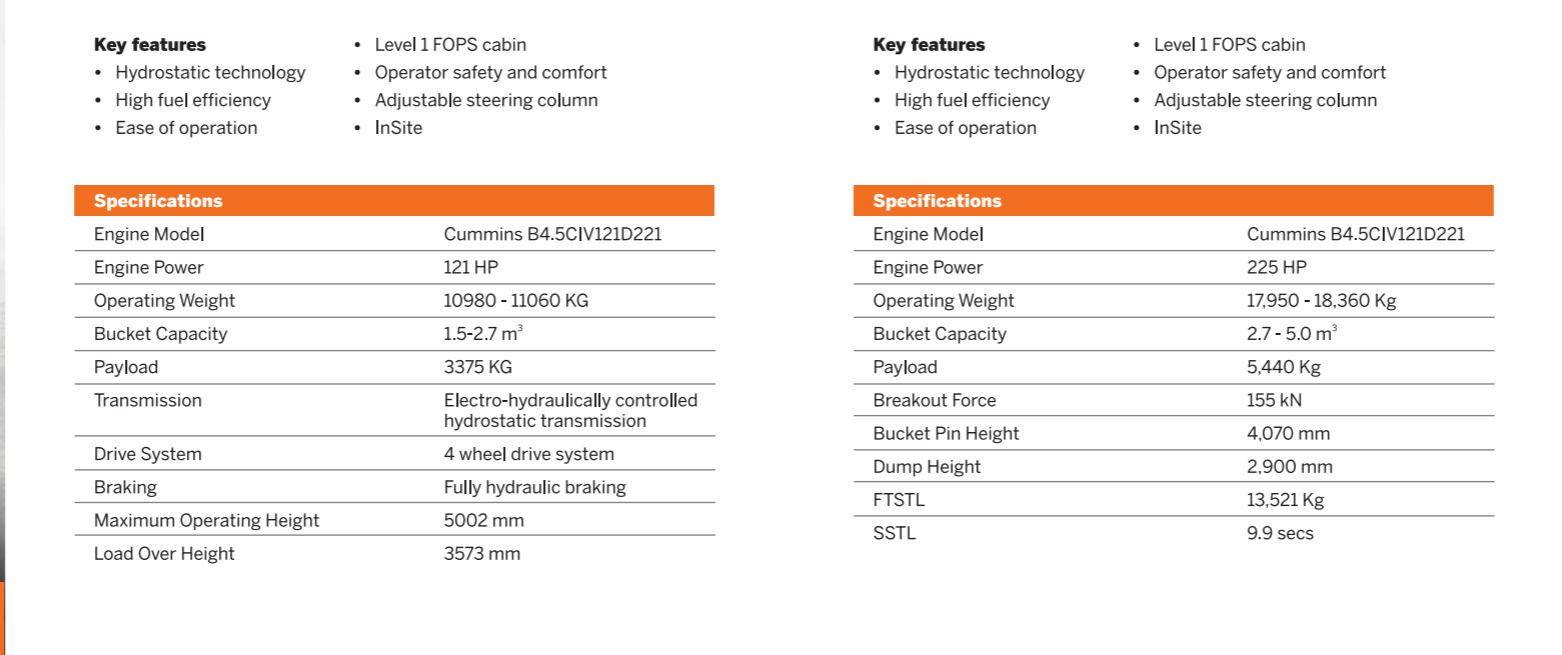
Machine Care Facility



Field Diagnostic Vehicle



Mobile Workshop





**EX215LC**  
Super  
SERIES  
QUARRY

**Key features**

- Heavy duty track parts
- HD mainframe & trackframe
- Higher production for lesser fuel
- Heavy duty boom and arm
- Enhanced operator comfort
- Higher operational speeds

Specifications	
Engine Model	Cummins 6BT5.9C
Engine Power	133 PS
Operating Weight	21250 KG
Bucket Capacity	0.91 - 1.0 m³
Boom	5680 mm
Arm	2220 mm
Swing Speed	13.7 rpm
Travel Speed	4.2 kmph
Bucket Digging Force	11000 kgf
Arm Crowding Force	11300 kgf
Maximum Digging Depth	5910 mm
Maximum Digging Reach	9250 mm



**EX215LC-SLR**  
Super  
SERIES

**Key features**

- Hitachi's optimum hydraulic system
- Stronger front attachments
- Easy to maintain
- Enhanced safety and comfort
- Highly controllable front attachment
- High return on investment

Specifications	
Engine Model	Cummins 6BT5.9C
Engine Power	133 PS
Operating Weight	20800-21300 KG
Bucket Capacity	0.5 m³
Boom	8.23 m
Arm	6.37 m
Swing Speed	13.7 rpm
Travel Speed	4.2 kmph
Bucket Digging Force	7156 kgf
Arm Crowding Force	4819 kgf
Maximum Digging Depth	11628 mm
Maximum Digging Reach	15560 mm



**ZA/IS80**

**Key features**

- More production with less fuel
- Operator comfort
- Sturdiness and durability
- Global e-service

Specifications	
Engine Model	MHI S4S
Engine Power	56 PS (55 HP)
Operating Weight	7300-7650 KG
Bucket Capacity	0.13-0.30 m³
Boom	4398 mm
Arm	2163 mm
Swing Speed	10.4 rpm
Travel Speed	5.0 kmph
Bucket Digging Force	5600 kgf
Arm Crowding Force	3300 kgf
Maximum Digging Depth	4670 mm
Maximum Digging Reach	6810 mm



**ZA/IS140H**

**Key features**

- High production with less fuel
- Class leading forces
- High operator comfort and safety
- HIOS III hydraulic system
- Versatile
- ConSite

Specifications	
Engine Model	MHI S4K-T
Engine Power	95 PS
Operating Weight	13360 KG
Bucket Capacity	0.45-0.7 m³
Boom	4600 mm
Arm	2100/3010 mm
Swing Speed	13.7 rpm
Travel Speed	3.4-5.5 kmph
Bucket Digging Force	10600 kgf
Arm Crowding Force	7900 kgf
Maximum Digging Depth	5150 mm
Maximum Digging Reach	7900 mm



**ZA/IS220LC**

**Key features**

- Advanced technology for powerful excavation
- Latest HIOS III hydraulic system
- Powerful & reliable engine
- Reliable & durable structures
- Maximum operator safety & comfort
- Manage your fleet with ConSite

Specifications	
Engine Model	ISUZU CC- 6BG1T
Engine Power	170 PS
Operating Weight	21700 KG
Bucket Capacity	0.9-1.22 m³
Boom	5.68 m
Arm	2.4 m
Swing Speed	13.0 rpm
Travel Speed	3.5-5.5 kmph
Bucket Digging Force	16100 kgf
Arm Crowding Force	15000 kgf
Maximum Digging Depth	6120 mm
Maximum Digging Reach	9430 mm



**ZA/IS220LC-M**

**Key features**

- Powerful operations
- Latest HIOS III hydraulic system
- Powerful & reliable engine
- Reliable & durable structures
- Enhanced operator safety & comfort
- Manage your fleet with ConSite

Specifications	
Engine Model	Mitsubishi S6K-TA61MHTA
Engine Power	163 PS
Operating Weight	20900-21700 KG
Bucket Capacity	0.9-1.22 m³
Boom	5.6 m
Arm	2.4 m
Swing Speed	13.0 rpm
Travel Speed	3.5-5.5 kmph
Bucket Digging Force	16100 kgf
Arm Crowding Force	14200 kgf
Maximum Digging Depth	6120 mm
Maximum Digging Reach	9430 mm



**ZA/IS370LCH**

**Key features**

- Powerful operations
- Class leading forces
- High production for less fuel
- Rugged, durable structures
- Spacious and comfortable cabin
- Control your fleet with ConSite

Specifications	
Engine Model	ISUZU AA-6HK1X
Engine Power	250 PS
Operating Weight	35400-35900 KG
Bucket Capacity	1.3-2.5 m³
Boom	6400 mm
Arm	2660 mm
Swing Speed	10.7 rpm
Travel Speed	3.1-5.0 kmph
Bucket Digging Force	25085 kgf
Arm Crowding Force	22638 kgf
Maximum Digging Depth	6810 mm
Maximum Digging Reach	10570 mm



**ZA/IS400MTH**

**Key features**

- 47 Ton class track frame and undercarriage
- Class leading forces
- Control your fleet with ConSite
- Advanced technology for powerful operations
- Spacious and comfortable cabin

Specifications	
Engine Model	ISUZU AA-6HK1X
Engine Power	250 PS
Operating Weight	37100-37600 KG
Bucket Capacity	1.3-2.5 m³
Boom	6400 mm
Arm	2.66 m
Swing Speed	10.7 rpm
Travel Speed	2.8-5.1 kmph
Bucket Digging Force	25085 kgf
Arm Crowding Force	22638 kgf
Maximum Digging Depth	6810 mm
Maximum Digging Reach	10570 mm

# Compact Product Range



## Key features

- Reliable drive line for reliable performance
- Excellent hydraulic system

- Maximum comfort and safety
- InSite
- Ultimate support for the machine

## Specifications

Engine Model	V3800-TIE4B
Engine Power	74.3 HP
Operating Weight	8050 KG
Bucket Capacity	0.26 - 1.1 m <sup>3</sup>
Transmission	Carraro
Backhoe Bucket Digging Force	5685 kgf
Backhoe Arm Digging Force	3220 kgf
Backhoe Arm Length	1.96 m
Backhoe Boom Length	2.46 m
Maximum Digging Depth	4700 mm
Maximum Reach	6880 mm

## Key features

- Reliable drive line for reliable performance
- Excellent hydraulic system

- Maximum comfort and safety
- InSite
- Ultimate support for the machine

## Specifications

Engine Model	Cummins 4B 3.3T
Engine Power	47 HP
Operating Weight	7940 KG
Bucket Capacity	0.26 - 1.1 m <sup>3</sup>
Transmission	Carraro
Backhoe Bucket Digging Force	6,026 kgf
Backhoe Arm Digging Force	3,087 kgf
Backhoe Arm Length	1.96 m
Backhoe Boom Length	2.46 m
Maximum Digging Depth	4700 mm
Maximum Reach	6880 mm

## Key features

- Reliable drive line for reliable performance
- Excellent hydraulic system

- Maximum comfort and safety
- InSite
- Ultimate support for the machine

## Specifications

Engine Model	V3800-TIE4B
Engine Power	74.3 HP
Operating Weight	7800 KG
Bucket Capacity	1.1 m <sup>3</sup>
Transmission	Carraro
Payload	1980 kg
Dump Height	2690 mm
Load Over Height	3305 mm
Loader Break-Out Force	6580 kgf





TMX20 neo  
Super Series

#### Key features

- Excellent performance
- Versatile
- Easy to manoeuvre
- Low cost of operation & maintenance
- Best fuel efficiency

Specifications	
Engine Model	S217
Engine Power	28 HP
Operating Weight	2300 KG
Bucket Capacity	0.04-0.07 m <sup>3</sup>
Boom	1900 mm
Arm	1000 mm
Swing Speed	11 rpm
Travel Speed	3.27 kmph
Bucket Digging Force	1890 kgf
Arm Crowding Force	1300 kgf
Maximum Digging Depth	2323 mm
Maximum Digging Reach	4188 mm



ZAXIS23U

#### Key features

- Compact and power packed
- Quality and durability
- Zero tail
- Excellent performance
- Operator comfort & safety
- Easy to maintain

Specifications	
Engine Model	3TNV76
Engine Power	17.7 PS (13.0 KW)
Operating Weight	2320 KG
Bucket Capacity	0.07 m <sup>3</sup>
Boom	1880 mm
Arm	965 mm
Swing Speed	9.2 rpm
Travel Speed	2.6-4.4 kmph
Bucket Digging Force	1900 kgf
Arm Crowding Force	1260 kgf
Maximum Digging Depth	2330 mm
Maximum Digging Reach	4190 mm



NX30

#### Key features

- Compact and power packed
- Quality and durability
- Zero tail
- Excellent performance
- Operator comfort & safety
- Easy to maintain

Specifications	
Engine Make	Yanmar 3TNV88-B
Engine Power	19.7kW @ 2200 rpm
Operating Weight	2850 KG
Bucket Capacity	0.04, 0.07 m <sup>3</sup>
Boom	2100 mm
Arm	1200 mm
Swing Speed	10.5 rpm
Travel Speed	1.6/3.2 kmph
Bucket Digging Force	2325 kgf
Arm Crowding Force	1460 kgf
Maximum Digging Reach	4555 mm
Maximum Digging Depth	2625 mm



ZAXIS33U

#### Key features

- Powerful operations
- Zero tail
- Sturdy structures
- Most versatile
- Operator comfort
- Easy to transport

Specifications	
Engine Model	3TNV76
Engine Power	28.4 HP (21.2 KW)
Operating Weight	3270-3650 KG
Bucket Capacity	0.04-0.09 m <sup>3</sup>
Boom	2280 mm
Arm	1170 mm
Swing Speed	9.1 rpm
Travel Speed	2.8-4.3 kmph
Bucket Digging Force	2770 kgf
Arm Crowding Force	1720 kgf
Maximum Digging Depth	2790 mm
Maximum Digging Reach	4890 mm